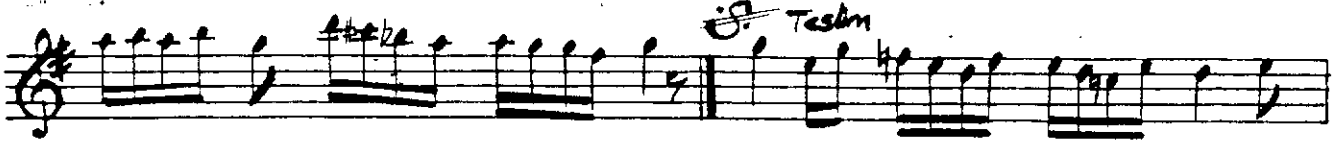
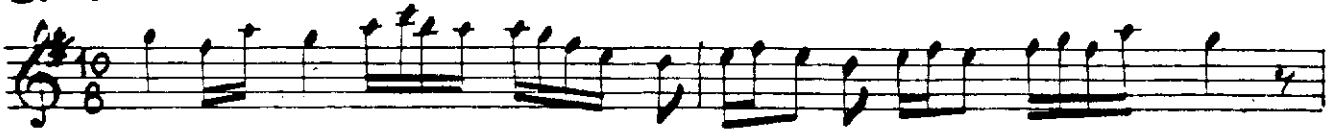


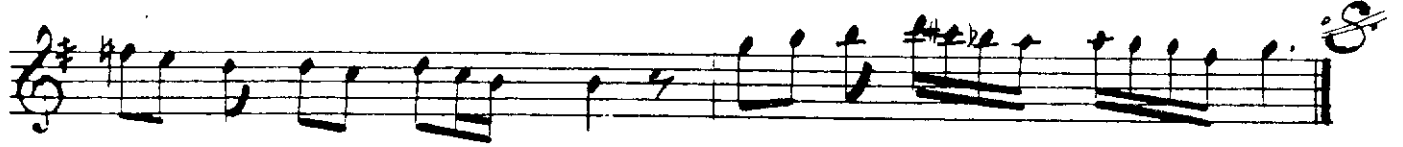
MAHUR SAZ SEMAİSİ

LEMİ ATLI

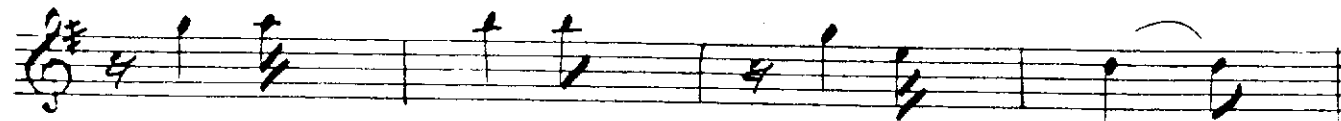
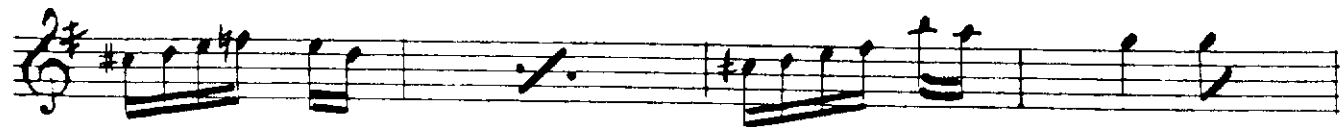
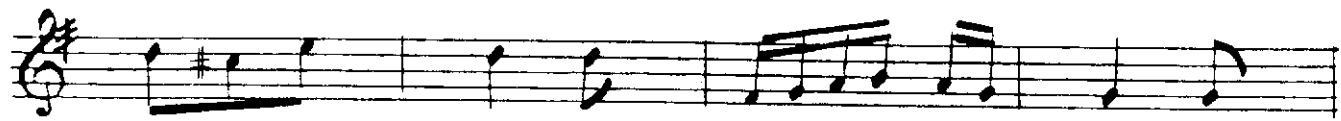
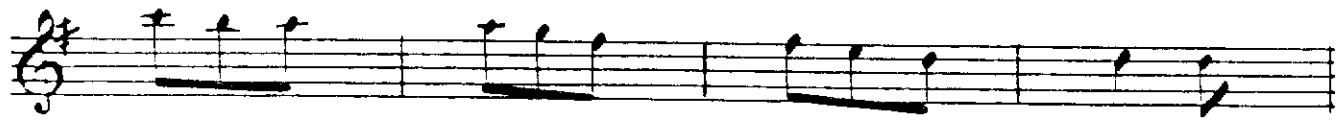
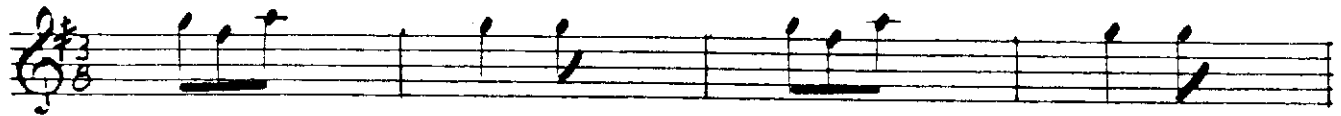
1. Hane



2. Hane



4. Hane



A handwritten musical score consisting of seven staves. The notation is in treble clef with a key signature of one sharp (F#). The first staff begins with a 4/4 time signature. The notation includes various note values (quarter, eighth, and sixteenth notes), rests, and accidentals (sharps and naturals). The music is written in a fluid, handwritten style. The final staff concludes with a double bar line and a fermata over the final note. The signature 'N. ALAN' is written in the bottom right corner of the page.